

A photograph of a modern kitchen with dark grey, minimalist cabinetry. Two built-in ovens are visible, with a red towel hanging from the handle of the right-hand oven. The word "veriset" is overlaid in white text at the top center, with a red dot above the 'i'. A red curved graphic element is positioned below the image.

veriset

KANTENSYMPOSIUM 2024



//

THE LASER PROCESS IN CONJUNCTION WITH DIGITAL PROCESS CONTROL

//



VERISET – WHO WE ARE

- Family firm in 2nd generation
- Largest Swiss kitchen manufacturer
- 350 employees
- Complete value creation
- 20,000 high-quality kitchens
- 3 production plants
- Kitchens in batch size 1
- 80 décors & special colours





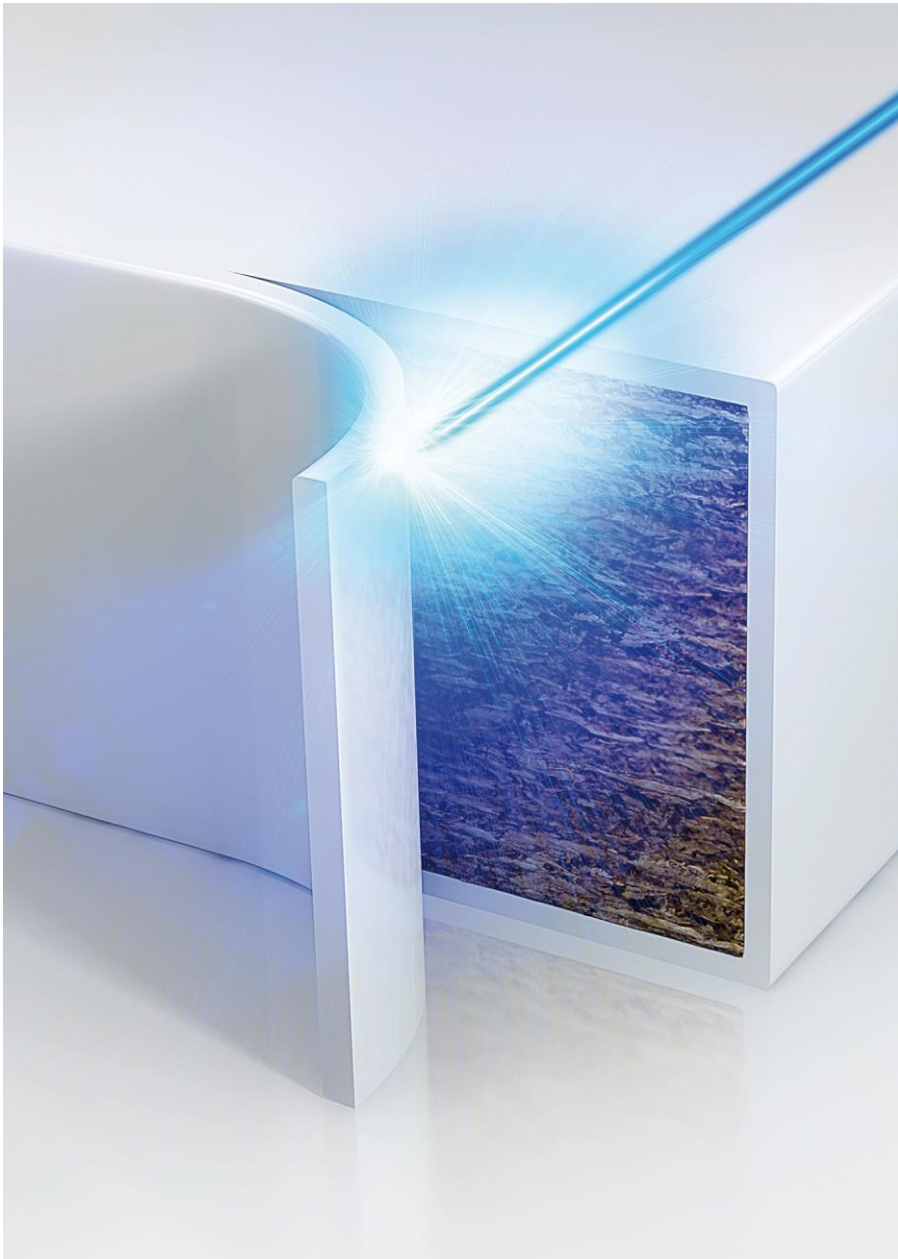
STEPS TO THE PERFECT COMPONENT

1. Customer needs
2. Plant and equipment
3. Laser technology
4. Production data
5. Quality
6. #edge is digital
7. Edge inspection
8. Production control



INNOVATIVE PLANT & EQUIPMENT

- Long-term strategy
- High project expertise
- High automation level
- Excellent data
- Consistent staff training
- Strong partners



LASER TECHNOLOGY

- Experience since 2011
- Major learning curve
- All front panels lasered
- HOMAG & IMA experience
- Preventive maintenance
- Laser performance test

3300002	000000733300066	000000733300008	000000733300013	000000733300026
3300001	000000733300065	000000733300007	000000733300012	000000733300025
00007333	0000007333	0000007333	0000007333	0000007333
333_001	0000007333_001	0000007333_001	0000007333_001	0000007333_001
02	02	02	02	02
0	0	0	0	0
5337114	2035308422	2035337120	2035337125	2035337138
Auszug	Seite FF links	Auszug	Auszug	Auszug
347	766	207	115	347
600	577	600	600	400
343	762	203	111	343
596	573	596	596	396
19	19	19	19	19
120201	120201	120201	120201	120201
0	0	0	0	0
0	0	0	0	0
0	0	0	0	0
0	0	0	0	0
11.2021	29.11.2021	30.11.2021	01.12.2021	30.11.2021
0	0	0	0	0
0	0	0	0	0
150	150	150	150	150
370	370	370	370	370
333_001	1-0000007333_001	1-0000007333_001	1-0000007333_001	1-0000007333_001
0	0	0	0	0
1	1	1	1	1
1	1	1	1	1
0	0	0	0	0
1110	1110	1110	1110	1110
R10-R10-2-0	R10-R10-2-0	R10-R10-2-0	R10-R10-2-0	R10-R10-2-0
0-000-000	11-000-000-000-000-000	11-000-000-000-000-000	11-000-000-000-000-000	11-000-000-000-000-000
000-0000	1-045-200080-0000-0000	0-000-000000-0000-0000	0-000-000000-0000-0000	0-000-000000-0000-0000
0	0	0	0	0
3	3	3	3	3
191201N	191201N	191201N	191201N	191201N
1	1	1	1	1
180	180	180	180	180
1110	1110	1110	1110	1110
R10-R10-2-0	R10-R10-2-0	R10-R10-2-0	R10-R10-2-0	R10-R10-2-0
0-000-000	11-000-000-000-000-000	11-000-000-000-000-000	11-000-000-000-000-000	11-000-000-000-000-000
000-00000	0-000-000000-0000-0000	0-000-000000-0000-0000	0-000-000000-0000-0000	0-000-000000-0000-0000
0	0	0	0	0
3	3	3	3	3
191201N	191201N	191201N	191201N	191201N
1	1	1	1	1
270	90	270	90	270
1110	1110	1110	1110	1110
R10-R10-2-0	R10-R10-2-0	R10-R10-2-0	R10-R10-2-0	R10-R10-2-0
R10-R10	11-R10-R10-R10-R10-R10	11-R10-R10-R10-R10-R10	11-R10-R10-R10-R10-R10	11-R10-R10-R10-R10-R10
000-00000	0-000-000000-0000-0000	3-037-170080-2005-2005	0-000-000000-0000-0000	0-000-000000-0000-0000
0	0	0	0	0
3	3	3	3	3
191201N	191201N	191201N	191201N	191201N
1	1	1	1	1
90	270	90	270	90
1110	1110	1110	1110	1110
R10-R10-2-0	R10-R10-2-0	R10-R10-2-0	R10-R10-2-0	R10-R10-2-0
R10-R10	11-R10-R10-R10-R10-R10	11-R10-R10-R10-R10-R10	11-R10-R10-R10-R10-R10	11-R10-R10-R10-R10-R10
005-2005	0-000-000000-0000-0000	3-037-170080-2005-2005	3-037-170080-2005-2005	3-037-170080-2005-2005
0	0	0	0	0
3	3	3	3	3
191201N	191201N	191201N	191201N	191201N
0	0	0	0	0
0	0	0	0	0

PRODUCTION DATA

- >500 data items per part
- Client-based network
- Consistent optimisation
- High data quality
- Max. availability
- Own experts



QUALITY

- Own test laboratory
- Data collection from 2014
- Systematic testing
- DIM cert. development
- Process & product testing
- Competent core group



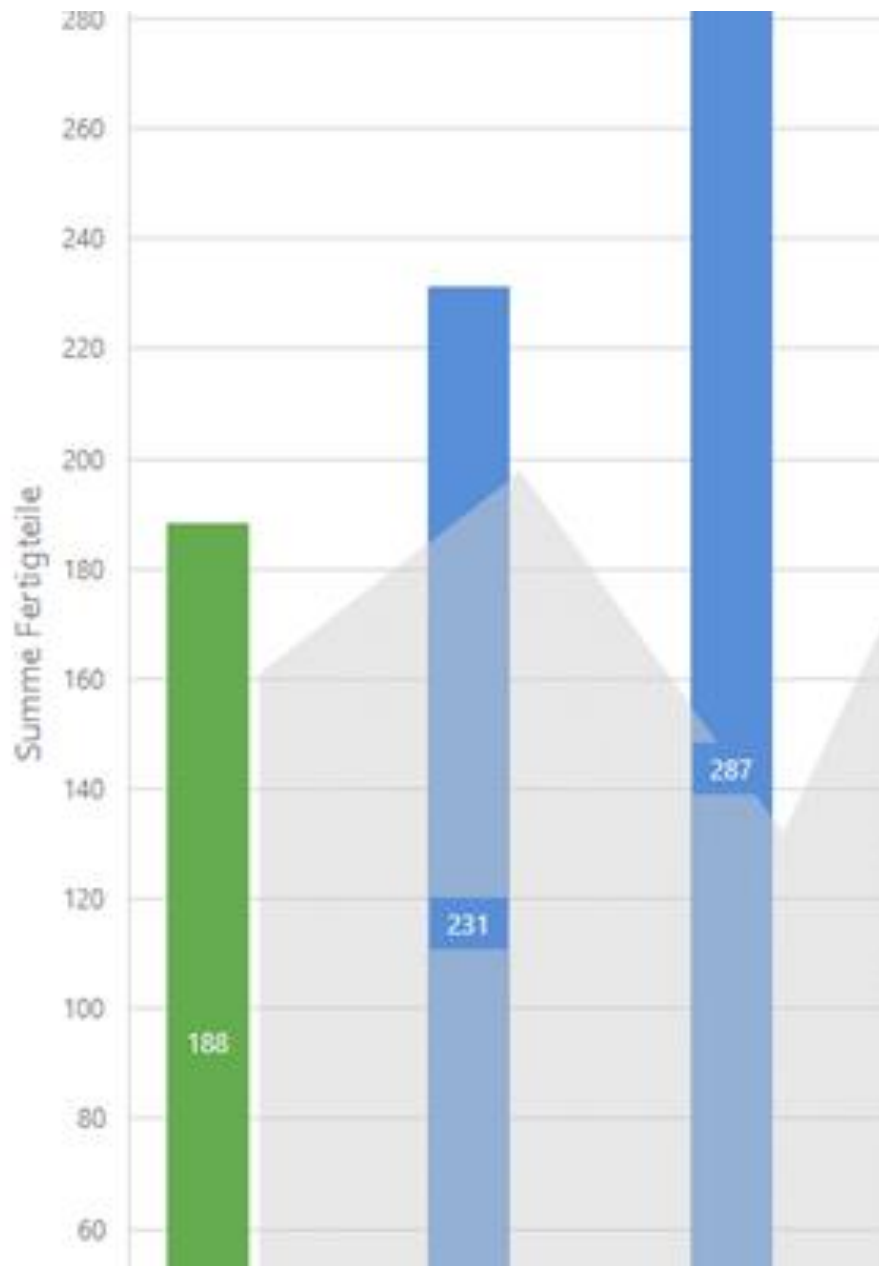
#EDGE IS DIGITAL

- Ease of use
- Clear identification
- Correct joule values
- All product parameters
- Batch tracing
- Residual edge management



EDGE INSPECTION

- Process monitoring
- Hit rate >98%
- Reduction in reproduction
- 170 parts in circulation
- Defined quality
- Assortment & special colours



DMAIC PRODUCTION CONTROL SYSTEM

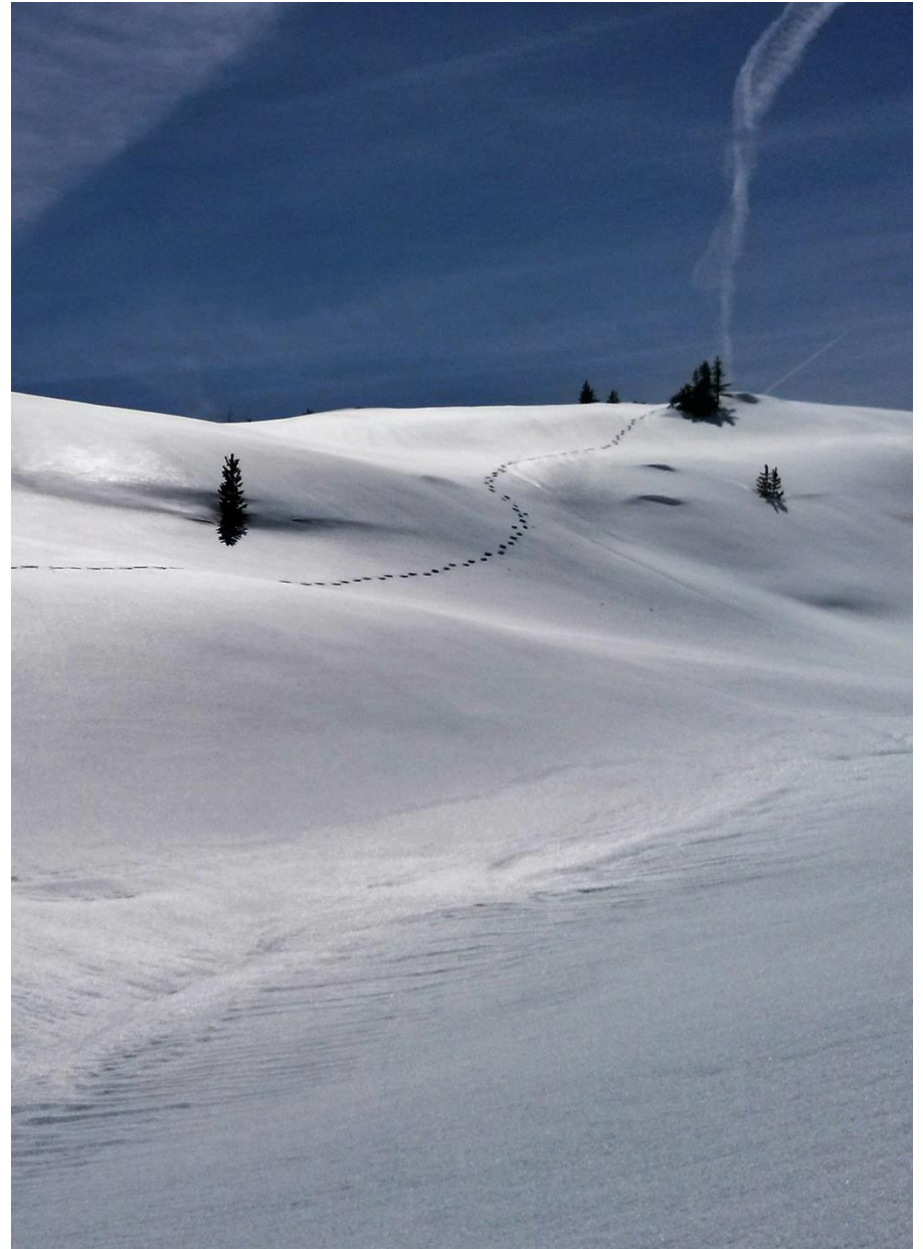
- Centralised data logging
- Live data
- KPIs
- Quality data
- Delivery reliability of data
- Transparent & networked

PREREQUISITE FOR OUR SUCCESS



PRIORITY OF INDUSTRY?

1. Panels?
2. Edges?
3. Systems?
4. Expertise?
5. Data?
6. Tools?



NEXT STEPS TO THE PERFECT COMPONENT



Panels

- Identification of individual panels
- Uniform material thickness
- Quality label for high-grade panel products
- Digital transmission of identified panel errors
- High-grade front panels without protective film



Edges

- "Loss-free" edge production
- Return of edge remnants
- Décor design on radius

NEXT STEPS TO THE PERFECT COMPONENT



Systems

- Increase in technical availability
- Systems for continuous monitoring of production quality & availability
- Intuitive operation
- Spare parts supply



Expertise

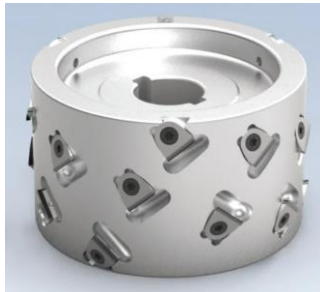
- Standardised qualification & "driving licence"
- Competence development level of operators
- Training conducted through system suppliers
- Online training tools

NEXT STEPS TO THE PERFECT COMPONENT

	1-000007333_001	1-000007333_001
Fertigungslos		
Abtapelplatz		
Zuschneiddatum		
letzte Drehung		
Zeit oder Handhabnahme	0	0
Bearbeitung	1	1
Einlauf Rotation	0	0
Vorfäsen / Frommlieren	1110	1110
tie, Radius und Leimart	R10-R10-2-0	R10-R10-2-0
irputzen und Runden	11-000-000-000-000	11-000-000-000-000 11-0
fluten und Fälzen	0-000-000000-0000-0000	1-045-200000-0000-0000 0-000
Hydrophobieren	3	3
Abteilnummer Karte	191201N	191201N
Bearbeitung	1	1
Einlauf Rotation	180	180
Vorfäsen / Frommlieren	1110	1110
tie, Radius und Leimart	R10-R10-2-0	R10-R10-2-0
irputzen und Runden	11-000-000-000-000	11-000-000-000-000 11-0

Data

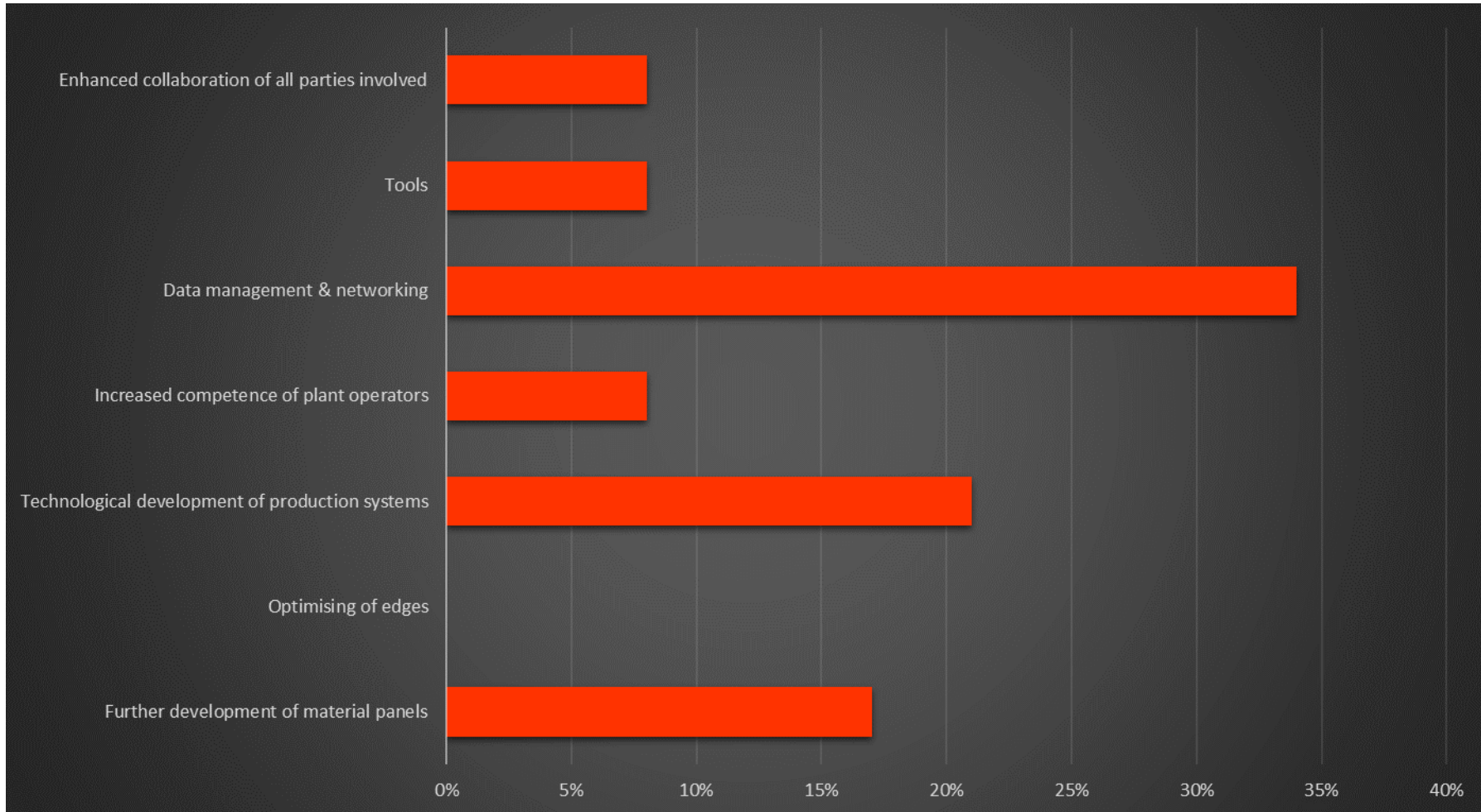
- Industry standards
- Defined & open interfaces
- Data transmission as of value creation
- Data for efficient production control
- Connection of production plants



Tools

- Downtime management
- Identification
- Transmission of measurement parameters
- Detection of defective tools in process

SURVEY RESULTS



Response from 12 participants at the Edge Symposium on 14 March 2024



“

THANK YOU FOR
YOUR ATTENTION.

WE LOOK FORWARD
TO MEETING YOU
PERSONALLY.

”

Veriset AG

Oberfeld 8
CH-6037 Root / Switzerland
www.veriset.ch

Christian Kramis, Head of Production & Logistics, Member of the Executive Board
+41 41 455 46 79 | +41 79 628 68 45 | christian.kramis@veriset.ch

Andreas Häni, Head of Engineering and Co-Head of AVOR/PPS
+41 41 455 46 35 | andreas.haeni@veriset.ch