

# PRODUCT INFO - THROUGH-FEED SYNCHRONOUSLY ADJUSTABLE JOINTING CUTTER ON HYDRO-BUSHING

Product Management

April 2021

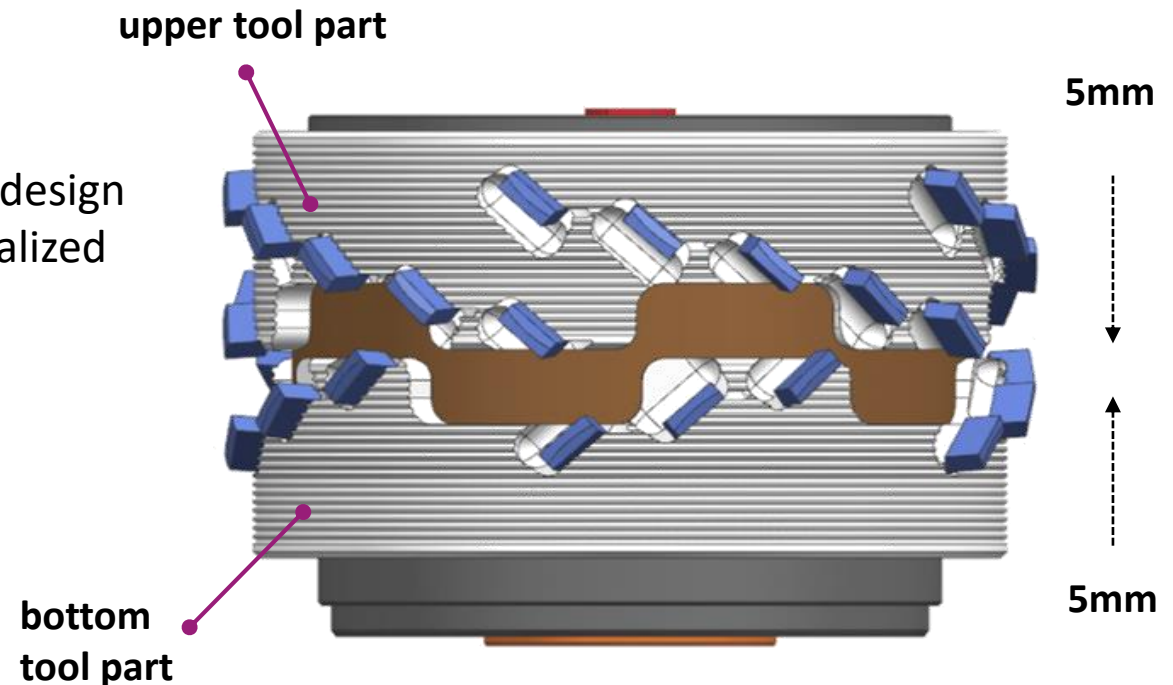


# PRODUCT SPECIFICATIONS

- **synchronously adjustable Jointing Cutter on Hydro-Bushing - d30:**
  - For use on through-feed machines with hydro motors – for shaft 30.
  - for chip-free jointing of melamine resin- and paper-coated, HPL-, foil-coated and veneered wood based panels with the option for addition of edge lives!

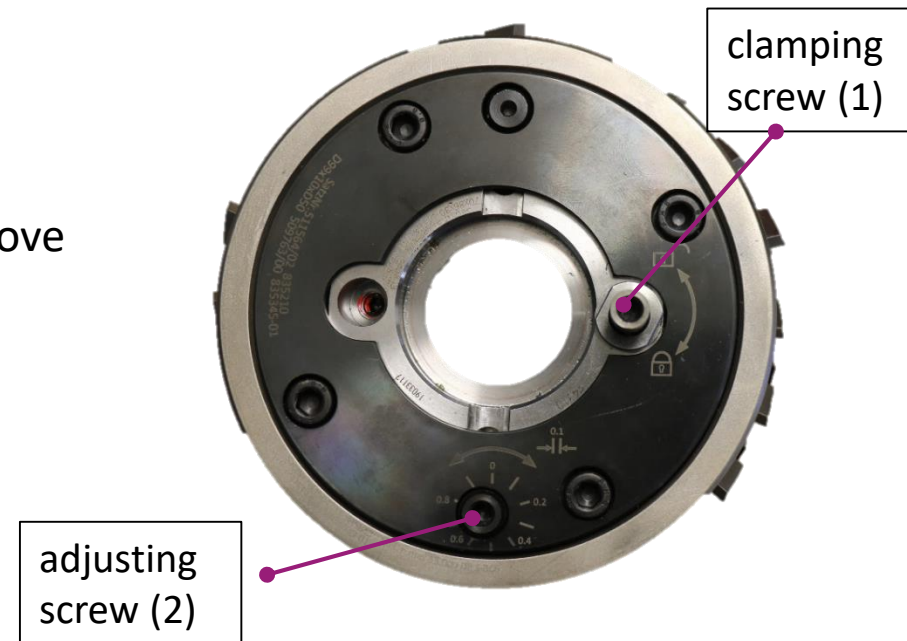
- **Available versions:**

- Diameter: 125 & 150
- Asymmetrical and symmetrical cutting edge design
- Different shear angles and designs can be realized



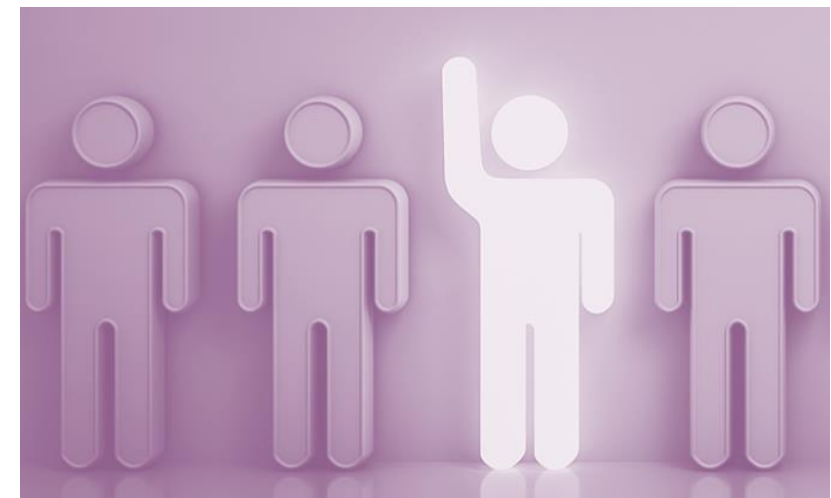
# TECHNICAL FEATURES

- **Adjustment of the tools:**
  - stepless synchronous adjustment!
  - axial actuation (from above!)
  - adjustment path = 10mm
    - 5mm each cutter part
    - One turn = 1mm top/ bottom
  - For the adjustment the same wrench is required as for the clamping screw!
- **Handling:**
  - Loosen clamping screw (1) completely
  - Turn adjusting screw (2) counterclockwise (tool parts move together)
  - Retighten the clamping screw (1).
- **Duration:**
  - approx. 5-10 minutes.
  - Time required for a tool change: 45-60 minutes.



# APPLICATIONS

- **Industrially oriented furniture manufacturers** with focus on cost-efficiency!
  - e.g. kitchen manufacturers
- **Limited range of panel thicknesses**
  - z.B. machines for fronts production (16mm & 19mm)
  - An ideal effect on additional tool edge lives is realized with only one kind of panel thickness.
- **Abrasive top layer material**, which leads to rapid wear of the cutting edges:
- **High machine operating time**, 2-3 shift operation  
≈ over 50.000 operation meters /per year. The more, the more profitable!
- **Experienced machine operators** who feel able to recognize the need for an adjustment and who can carry it out independently.



# ADVANTAGES / CUSTOMER BENEFITS

...compared to one-piece jointing cutters:

- **ECONOMIC EFFICIENCY:**
  - 3-times to maximum 5-times **MORE TOOL EDGE LIVE** possible
  - **COST SAVING** for service and new tools
    - the more operation meters, the more savings!
  - **SAVES TIME** and set-up costs
    - 10 minutes for adjustment <> 45 minutes for tool change
  - **INCREASES MACHINE AVAILABILITY** and parts output
  - Adjusting components and bushing are **REUSABLE**



# ADVANTAGES / CUSTOMER BENEFITS

- **HANDLING:**

- **SIMPLE HANDLING** of the adjustment!
  - Easily accessible by axial adjustment (from above)
  - **NO DISASSEMBLY** of the tool necessary
  - **ONE WRENCH** for adjustment as well as for loosening and tightening of the hydro-bushing.
  - **IDENTIFICATION** of the screw function on the lid of the tool
  - Due to synchronous adjustment **NO READJUSTMENT** of the y-axis necessary
  - After adjustment **NO SETTING** to a new diameter is necessary



# ADVANTAGES / CUSTOMER BENEFITS

- **CHARACTERISTICS:**

- Proved since 2012: LEUCO – **HYDRO CLAMPING BUSHING**
- Very **GOOD CUTTING QUALITY** due to quality and concentricity comparable with one-piece tools.
- technology is **ADAPTABLE** to different jointing cutter versions:
  - e.g. DIAMAX airFace, DIAREX airFace, LEUCO p-System
  - Asymmetrical and symmetrical design
  - **CUSTOMER-SPECIFIC DESIGN** regarding panel thickness, material, feed, ...
  - **PROTECTION AGAINST SOILING**, through axial adjustment and complete sealing of the system



**LEUCO**  
MAGENTIFY WOOD PROCESSING

LEUCO



**LEUCO Ledermann GmbH & Co. KG**

Willi-Ledermann-Straße 1  
72160 Horb am Neckar

info@leuco.com  
www.leuco.com

Telefon +49 (0) 7451 93 0

**Product Management**  
Christina Günther

christina.guenther@leuco.com

Telefon +49 (0) 7451 93 259