

This is Biesse

Company presentation

This is Biesse



We are an international company that manufactures integrated lines and machines to process wood, glass, stone, plastic and composite materials and what will come next.

Founded in Italy in 1969 and listed in the **Euronext STAR** segment of the Italian Stock Exchange, we support the business evolution of our customers in the furniture, housing & construction, automotive and aerospace sectors.

Today, **80%** of our consolidated turnover is achieved abroad by an ever-growing worldwide network with **4 manufacturing sites** and **30+ showrooms** reaching **over 160 countries**.

Thanks to our rooted competence embodied by **4,200 employees**, we empower the imagination of industry-leading companies and prestigious names in Italian and international design to make the potential of any material shine.



Vision

To simplify clients' manufacturing process, empowering their imagination to enhance people's everyday life.

Mission



To provide clients with the most suitable solutions, committing our rooted competence to enable them to unleash the potential within any material.

Biesse heritage



Biesse was founded in 1969 as a company dedicated to the design, manufacture and distribution of wood processing machinery. In a few years, the company became an integral part and engine of the Italian furniture industry and expanded throughout the country.

With the opening of the first foreign subsidiary, a strong internationalization process was launched that helped to establish the brand around the world.

Our history is a journey made of ambitious choices, collaborations and investment in research that have made it possible to manufacture state-of-the-art machinery.

Our history in milestones



1969 Biesse is founded in Pesaro, Italy, to design, manufacture and distribute wood processing machinery.

1983 Biesse launched on the market Rover, a numerical control wood processing centre.

1987 A business sector dedicated to design, manufacture, and distribute glass and stone processing machines is born.

1989 The internationalization process starts with the opening of the first subsidiary abroad.

1991 The HSD business unit is established to design, manufacture and distribute electromechanical components.

2001 Biesse S.p.A. is listed on the STAR segment of the Italian Stock Exchange.

2008 Opening of the first foreign manufacturing site in Bangalore, India.

2017 Biesse develops and launches its own IIOT platform, making its technology 4.0 ready.

2018 Biesse publishes its first Sustainability Report.

2020 Start of the corporate reorganization process which sees the transition from a business unit organization to a process-based organization.

2021 Acquisition of Forvet S.p.A. Costruzione Macchine Speciali, manufacturer of special automated machines for machining glass.
Creation of the Corporate Social Responsibility department confirming the company's commitment to social responsibility issues.

2022 Launch of the company's new visual identity (one brand approach).

Biesse values



International natives

The sense of belonging without borders that enhances the peculiarities of individuals.

Insightful curiosity

A constant desire for discovery, which turns into intuition.

Genuine “maestria”/mastery

The original “know-how” which comes out from a genuine tradition.

Widespread transparency

The honesty of the people, the integrity of the company.

Heartfelt commitment

The adherence to a common project, lived and strengthened on a daily basis.

Respectful sight

The care for the environment, society, people.

The new brand architecture



Master brand



Material brands



Independent brands

DIAMUT

HSD
MECHATRONICS

Multi-material mastery



The four material brands and their respective colors highlight the specifics of the business sectors in which we operate.

Biesse Wood, Biesse Glass, Biesse Stone and Biesse Materia guide the customer through the company's offering, expressing the distinctive characteristics of each business sector through the processed material.

Distinctive colors evoke the specific nature of each of the sectors and reinforce the concept of multi-materiality - an element that distinguishes Biesse from its competitors.

The shades selected are a direct reference to the materials they are inspired by: light brown for wood, light blue for glass, Verona red for stone and purple for plastics, chosen as the color that identifies a material which is not found in nature.

Multi-material mastery

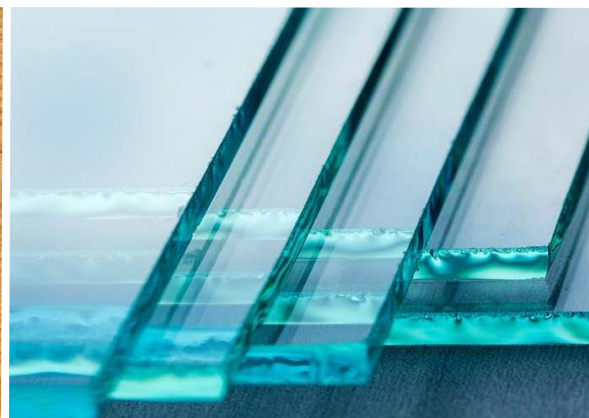


 BiesseWood



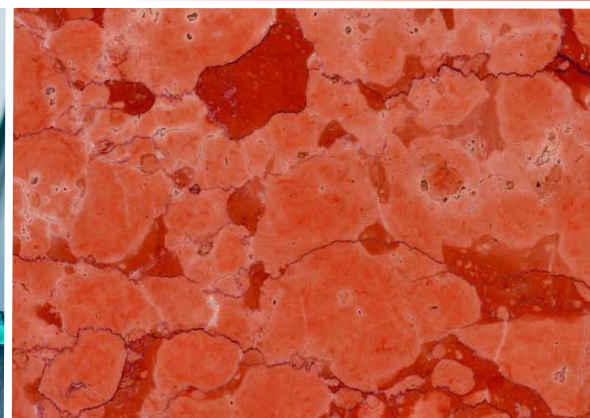
We design and manufacture wood processing integrated lines and machines for the furniture, window and door and building component industries.

 BiesseGlass



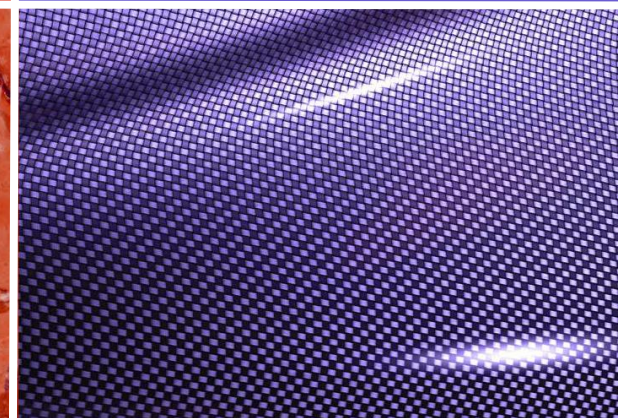
We design and manufacture glass processing integrated lines and machines for the furniture, construction and automotive industries.

 BiesseStone



We design and manufacture stone processing integrated lines and machines for the stone, furniture and building industries.

 BiesseMateria



We design and manufacture solutions for the processing of technological, packaging, construction and visual communication materials.

Mechatronics and tools



HSD
MECHATRONICS

HSD is the Biesse brand that designs, manufactures and distributes electrospindles, 2-axis milling heads and technologically advanced components for machining metal, alloys, composite materials and wood.

It boasts a structure of 8,000 square meters organized according to the principles of "Just in time" production

It operates through an Headquarters in Italy and 5 offices located in the main world markets.



DIAMUT

Diamut is the Biesse brand that designs, manufactures and distributes a complete range of tools for the machining of glass, natural and synthetic stone that can be used on CNC, automatic and semi-automatic machines.

Launched more than 30 years ago, it supplies companies operating from the aeronautical industry to the household appliance industry, from consumer electronics to furniture and architecture.

The range



Engineering solutions

We create engineering solutions, from system design to manufacturing, implementation, installation and maintenance.

Integrated lines

We create fully automated and integrated lines combining different technologies for material processing and logistics.

Machines

We design, manufacture and distribute a full range of machinery and technologies for processing wood, glass, stone, metal, plastics and composites.

After-sales & parts

We provide professional after-sales and spare parts services to support the efficiency and productivity of installed machinery.

Tooling

We design, manufacture and distribute a complete range of tools for working with glass, natural and synthetic stone and ceramics.

International natives

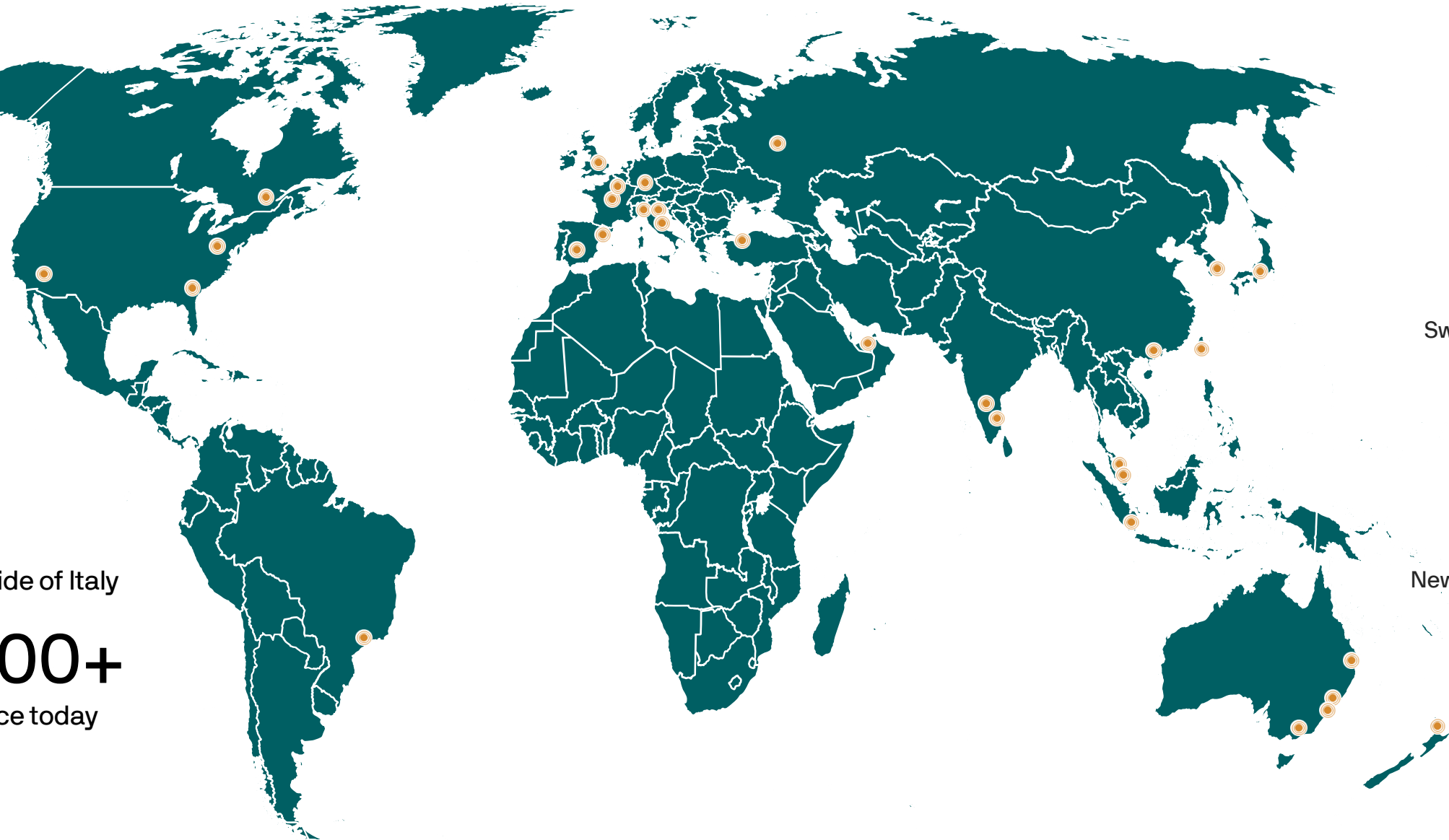


160+
countries

30+
showrooms

77%
revenues outside of Italy

100,000+
customers since today
(Biesse & HSD)



- Italy
- U.S.A
- Canada
- Brazil
- Portugal
- Spain
- France
- UK
- Germany
- Switzerland
- Turkey
- UAE
- Russia
- India
- Malaysia
- China
- Japan
- Australia
- New Zealand

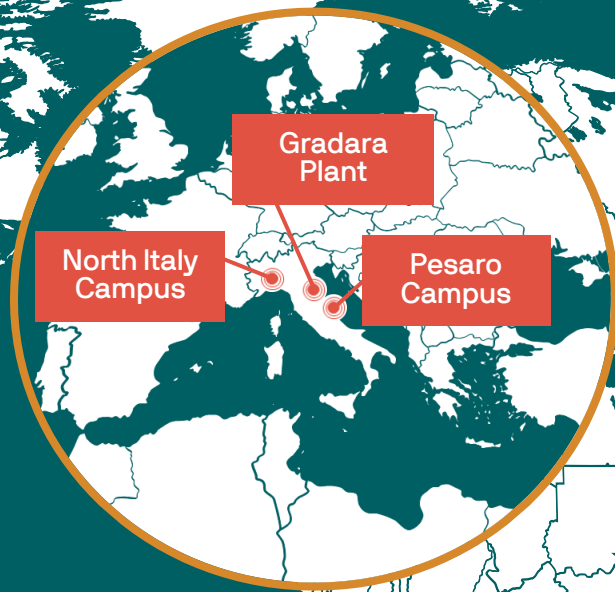
International natives



4,200
total employees
including temporary workers

72%
employees located
in Europe

7%
employees located in
North & South America



21%
employees
located in APAC

4
Manufacturing
Campus

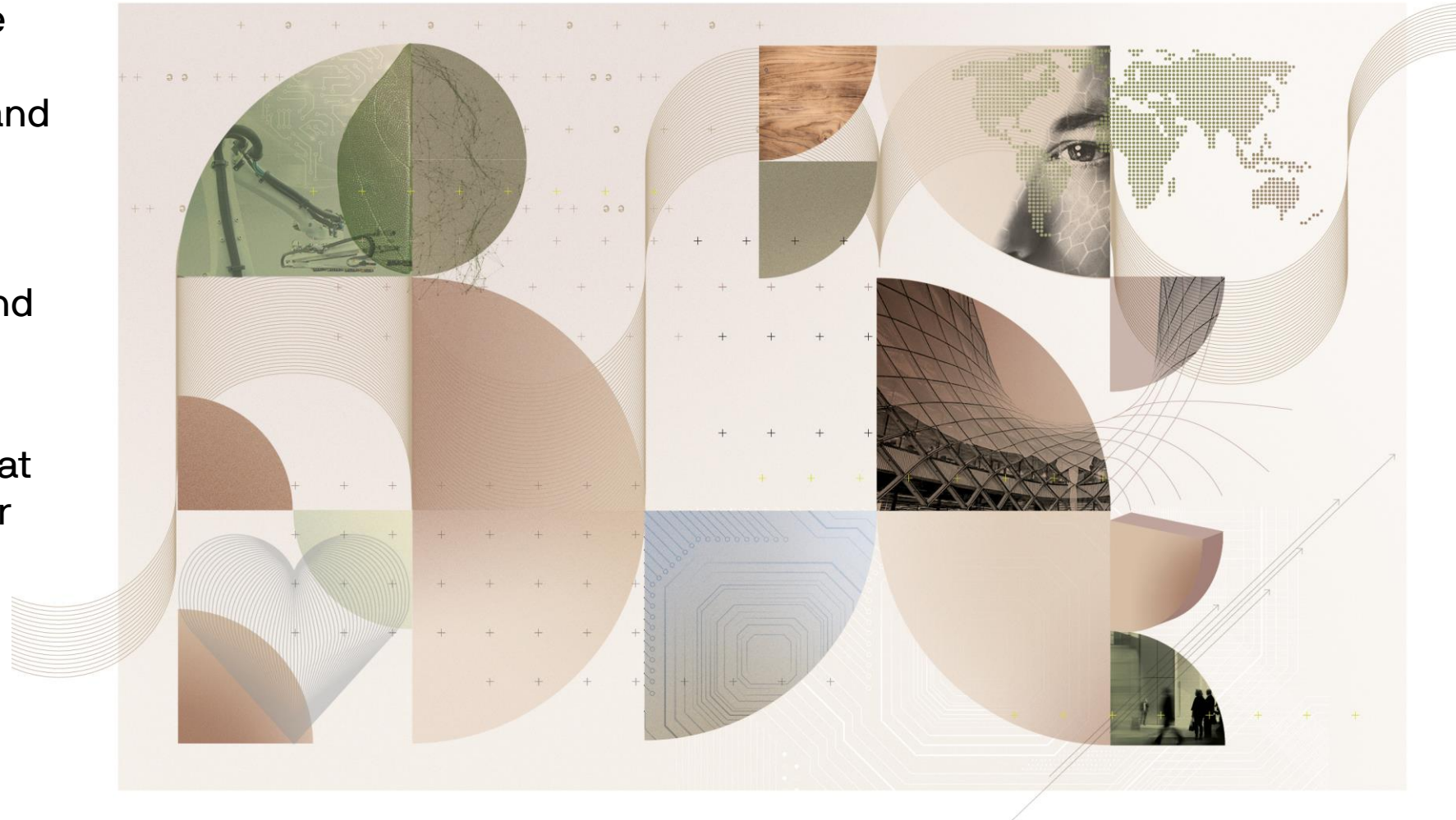
More than
6,000
solutions
produced
in 2022

Planning for a more sustainable future



The success of Biesse is also the result of the ability to recognize and evaluate its environmental and social impacts, to establish new collaborations, to involve employees and to build relationships of trust, honesty and integrity with customers and suppliers.

Sustainability, therefore, stands at the base of every choice, in order to ensure the company's long-term growth and success.



Planning for a more sustainable future



Economical sustainability in a nutshell

- **95%** of purchases from local suppliers, as far as manufacturing plants in Italy and India are concerned
- 5 manufacturing plants for Biesse S.p.A., 2 manufacturing sites for Biesse Manufacturing Co Pvt Ltd and 1 manufacturing site for HSD S.p.A. awarded **ISO 9001:2015 certification**

Environmental sustainability in a nutshell

- **100%** of electricity purchased from renewable sources with guarantees of origin for the Group's Italian companies (excluding Forvet)
- **16,500 m²** of photovoltaic panels installed
- Environmental management system of HSD S.p.A. and Biesse S.p.A. certified according to UNI ISO 14001:2015 standards
- Use of **cobalt-free** powders in Diamut products
- **787** tonnes of CO₂ avoided by using photovoltaic panels
- **93%** of waste products are non-hazardous.
- In 2022, Biesse purchased Guarantee of Origin certificates with the aim of reducing the corresponding CO₂ emissions (5,093 tons of CO₂)¹

Planning for a more sustainable future

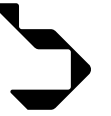


Social sustainability in a nutshell

- 96% of employees have permanent contracts
- Over 10,000 hours of health and safety training for employees
- Workplace safety management system of Biesse S.p.A. certified according to UNI ISO 45001:2018 standard
- Supplementary contract for smart working (Italy)
- More than 1,500 persons have worked in Biesse Group for more than 10 years
- Support for social, cultural, artistic and sports initiatives in the community
- Biesse Manufacturing India has carried out several educational projects supporting children and teenagers



Our customers' industries



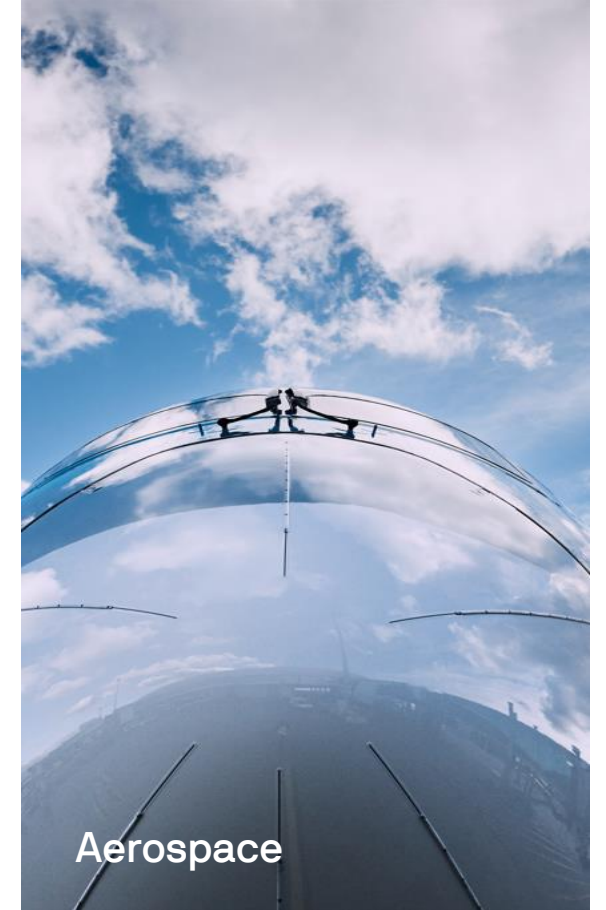
Furniture



Housing &
Construction



Automotive

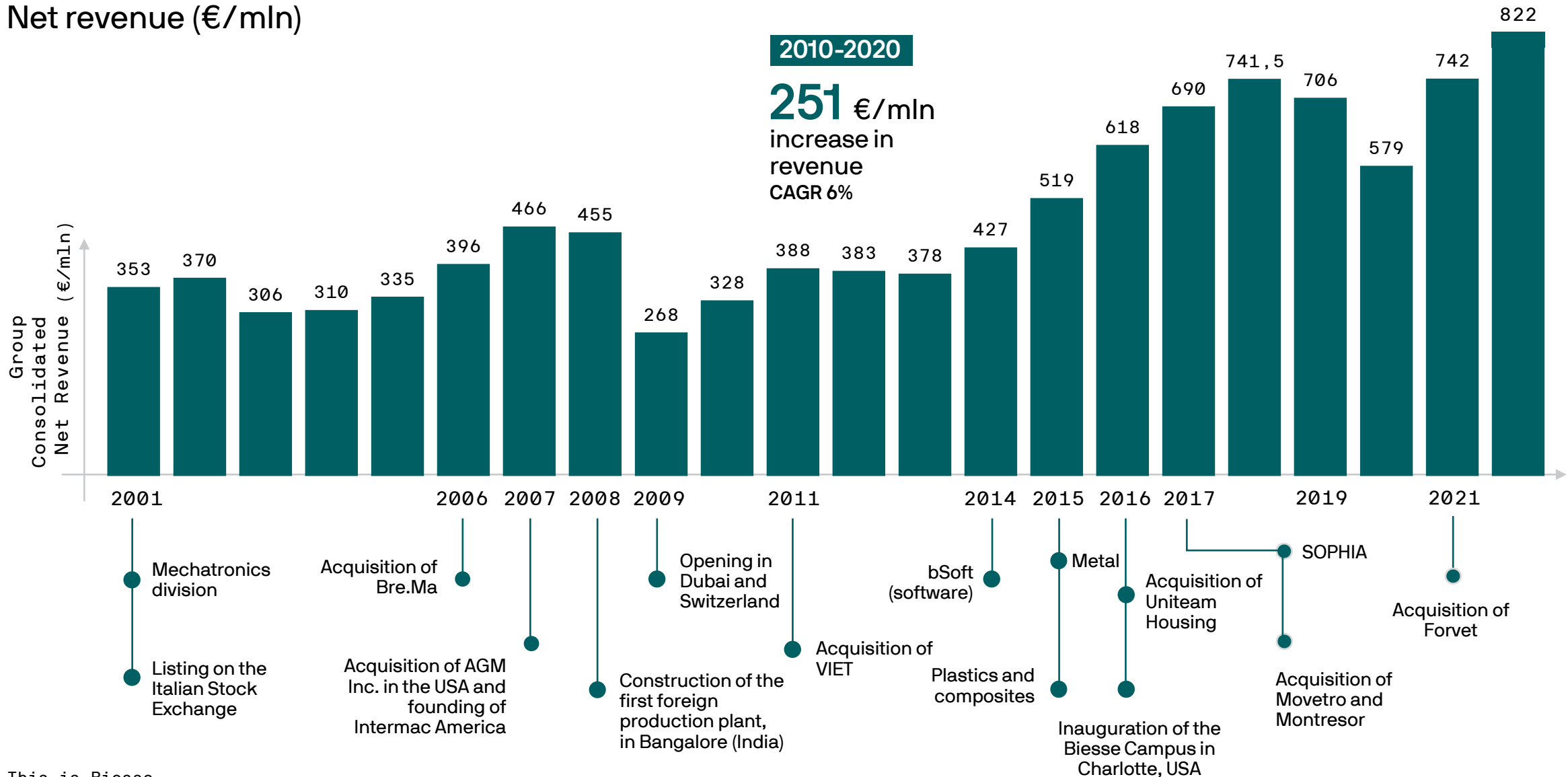


Aerospace

Revenues



Net revenue (€/mln)



Thank you.